



PTZ NETWORK CAMERA



QUICK INSTALLATION GUIDE
DN-16065-1

IMPORTANT SAFEGUARD



All lead-free products offered by the company comply with the requirements of the European law on the Restriction of Hazardous Substances (RoHS) directive, which means our manufacture processes and products are strictly “lead-free” and without the hazardous substances cited in the directive.



The crossed-out wheeled bin mark symbolizes that within the European Union the product must be collected separately at the product end-of-life. This applies to your product and any peripherals marked with this symbol. Do not dispose of these products as unsorted municipal waste. Contact your local dealer for procedures for recycling this equipment.

Trademark Acknowledgements

iPhone® is the registered trademark of Apple Inc.

BlackBerry® and related trademarks, names and logos are the property of Research In Motion Limited and are registered and/or used in the U.S. and countries around the world. Used under license from Research In Motion Limited.

Android™ is a trademark of Google Inc. Use of this trademark is subject to Google Permissions.

Windows Mobile & Symbian mentioned in this document are the registered trademarks of their respective holders.

Disclaimer

We reserve the right to revise or remove any content in this manual at any time. We do not warrant or assume any legal liability or responsibility for the accuracy, completeness, or usefulness of this manual. The content of this manual is subject to change without notice.

MPEG4 Licensing

THIS PRODUCT IS LICENSED UNDER THE MPEG4 VISUAL PATENT PORTFOLIO LICENSE FOR THE PERSONAL AND NON-COMMERCIAL USE OF A CONSUMER FOR (i) ENCODING VIDEO IN COMPLIANCE WITH THE MPEG4 VISUAL STANDARD (“MPEG-4 VIDEO”) AND/OR (ii) DECODING MPEG4 VIDEO THAT WAS ENCODED BY A CONSUMER ENGAGED IN A PERSONAL AND NON-COMMERCIAL ACTIVITY AND/OR WAS OBTAINED FROM A VIDEO PROVIDER LICENSED BY MPEG LA TO PROVIDE MPEG4 VIDEO. NO LICENSE IS GRANTED OR SHALL BE IMPLIED FOR ANY OTHER USE. ADDITIONAL INFORMATION INCLUDING THAT RELATING TO PROMOTIONAL INTERNAL AND COMMERCIAL USES AND LICENSING MAY BE OBTAINED FROM MPEG LA, LLC. SEE [HTTP://WWW.MPEGLA.COM](http://www.mpegla.com).

GPL Licensing



This product contains codes which are developed by Third-Party-Companies and which are subject to the GNU General Public License (“GPL”) or the GNU Lesser Public License (“LGPL”).

The GPL Code used in this product is released without warranty and is subject to the copyright of the corresponding author.

Further source codes which are subject to the GPL-licenses are available upon request.

We are pleased to provide our modifications to the Linux Kernel, as well as a few new commands, and some tools to get you into the code. The codes are provided on the FTP site, and please download them from the following site or you can refer to your distributor:

http://download.dvrtw.com.tw/GPL/076D_Series/arm-linux-2.6.tar.gz

TABLE OF CONTENTS

1. OVERVIEW.....	1
1.1 Package Content	1
1.2 Dimensions	1
1.2 Cable Overview.....	1
2. INSTALLATION & CONNECTION	3
2.1 Installation.....	3
2.2 Connect to power.....	5
3. CAMERA CONNECTION TO INTERNET	6
3.1 Camera Access via LAN	6
3.2 Network Configurations via Wizard.....	10
APPENDIX 1 CREATING AN ACCOUNT FOR DDNS SERVICE	14
APPENDIX 2 MOBILE SURVEILLANCE VIA EAGLEEYES	17
A2.1 Prerequisites.....	17
A2.2 Where to download	18

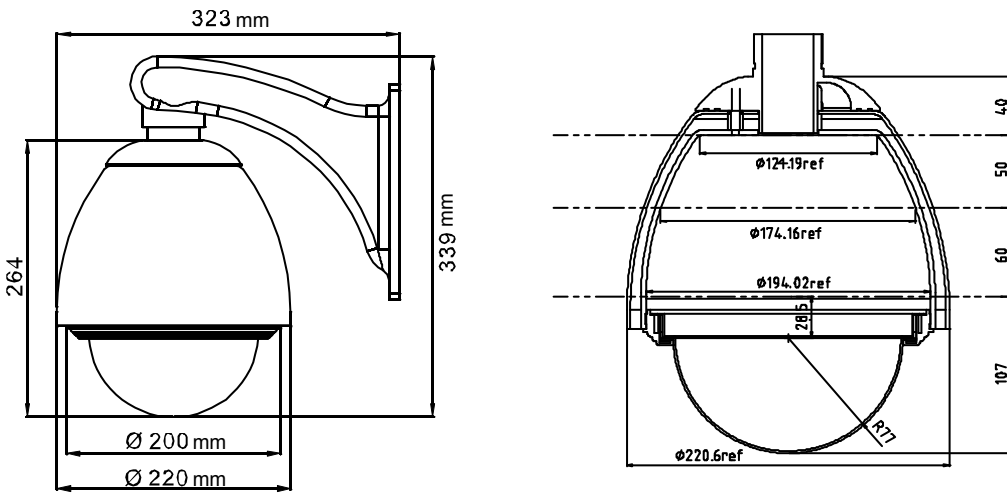
1. OVERVIEW

1.1 Package Content

- ⊙ **In the camera package:**
- camera module
 - Power & network cable
 - CD-ROM disc (including user manuals & CMS software “Video Viewer”)
 - Quick Start
 - RJ45 cable extender adapter
 - Accessory Pack

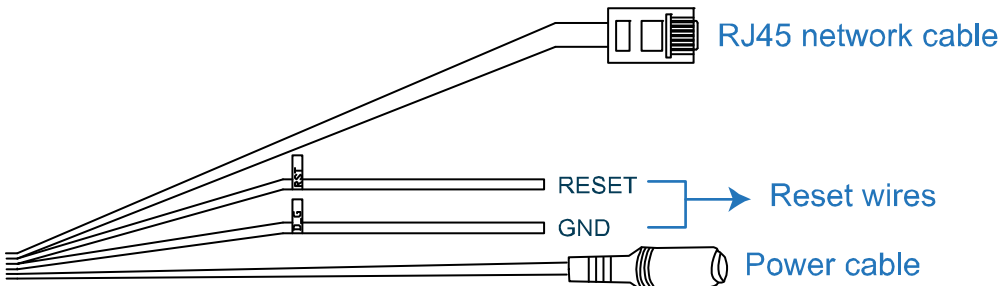
- ⊙ **In the bracket package:**
- Housing
 - Dome Cover
 - Bracket
 - Accessory pack

1.2 Dimensions



1.2 Cable Overview

Note: For detailed cable connection, please refer to “2. INSTALLATION & CONNECTION” at page 3.



CABLE	DESCRIPTION
RJ45 network cable	Connect it to the supplied RJ45 cable extender adapter for cable extension, and prepare another RJ45 network cable with suitable length for your connection.
Reset wires	Remove the insulating coating of these two wires, and twist them together to reset default. This will reset all parameters, including the IP address to factory default settings. Note: Disconnect power before twisting these two wires together, and connect to power again for reset default.
Power cable	Connect to DC12V power supply.

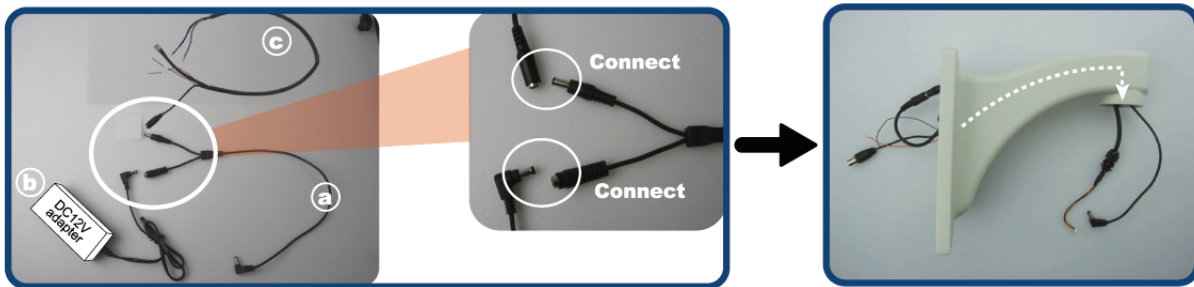
2. INSTALLATION & CONNECTION

For the installation and connection of this camera, please check with qualified service personnel or installer.

2.1 Installation

- 1 **Attach the bracket to the position where it will be installed, and mark four screw holes on the wall.**

- 2 **Put cables through the bracket.**



Find the three cables and connect as indicated above:

- (a) Extension cable*.
- (b) Adapter cable*.
- (c) Video & power cable (In the camera package).

* The cable (a) & (b) are optional and needs to be purchased separately.

Then, put cable (a) and (c) through the bracket.

- 3 **Fix the bracket to the wall and put cable (a) and (c) through the housing.**



Based on your installation environment, arrange the cables to hide behind the wall by drilling a hole on the wall, or arrange the cables to walk along the wall.

Note: The adapter is not water-proof. To prevent it from moisture, hide the adapter to the bracket when the cable is arranged to walk along the wall.

Then, secure the bracket to the wall with four screws (not supplied in the sales package).

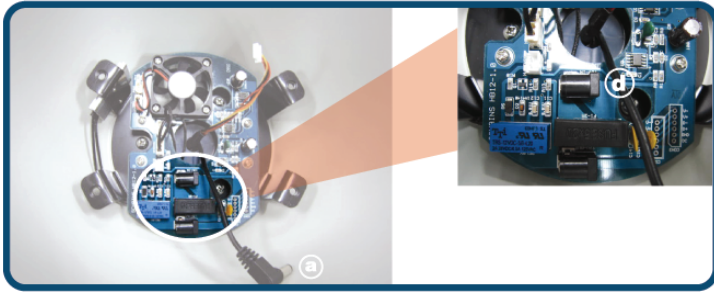
Next, put cable (a) and (c) through the housing, and rotate the housing counterclockwise to fix.

- 4 **Fasten the joint lock.**



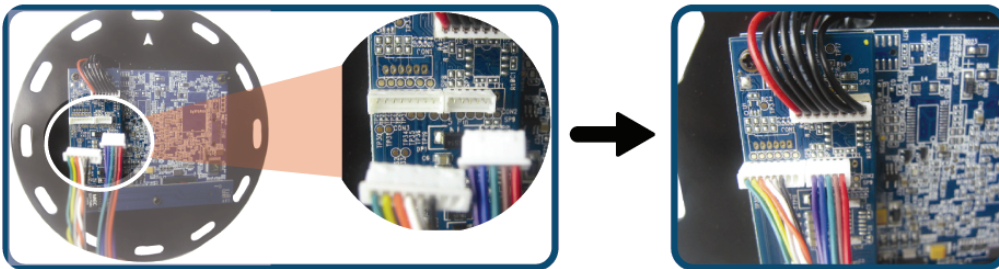
Find the supplied wrench in the bracket package, and fasten the joint lock as indicated above.

5 Connect to PCB board in the housing.



In the housing, connect cable **a** to jack **d** (12V-IN).

6 Put the camera module into the housing, and connect the 6pin and 5pin cables.



- a). Find the two jacks as illustrated above at the bottom of the camera module.
- b). Put the camera module into the housing, and connect the 6pin and 5pin cables to their corresponding jacks.

7 Fix the camera module to the housing.



Find the mark "➤" on the iron plate of the camera module, and rotate the plate with the mark "➤" to face the direction opposite to the bracket.

Slightly rotate and adjust the plate to align its screw holes with the four screw holes on the four brackets in the housing.

Then, fix the module to the housing with the supplied four screw holes.

8 Install the dome cover.



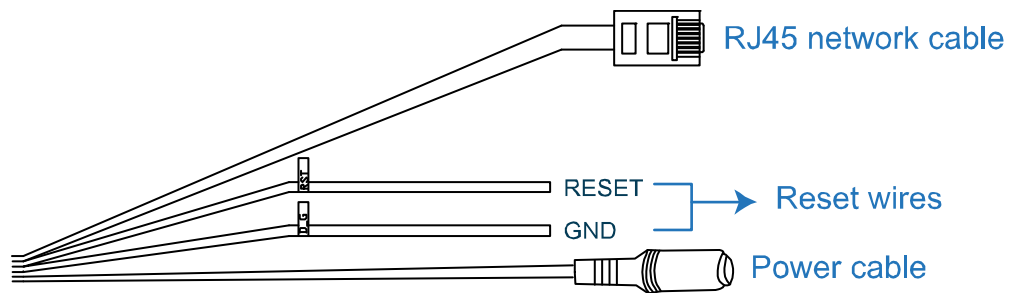
Put the dome cover on the housing, and rotate it counterclockwise to fix.

9 Prevent the adapter from moisture.

The adapter is not waterproof. To prevent the adapter from moisture, it's recommended to seal the contact surface between the bracket and the wall, and also the screw holes with waterproof silicone sealants.

2.2 Connect to power

Connect the power adapter (optional) to the camera's power connector and power outlet.



Note: The regulated power adapter is DC12V to operate this device.

3. CAMERA CONNECTION TO INTERNET

Before using this network camera, please follow the instructions below to finish the network connection settings based on your installation environment:

- To configure the network settings, you must connect the camera to your PC by LAN. For details, please refer to “Camera Access via LAN” at page 6.
- To configure the network settings via Wizard, please refer to “3.2 Network Configurations via Wizard” at page 10.

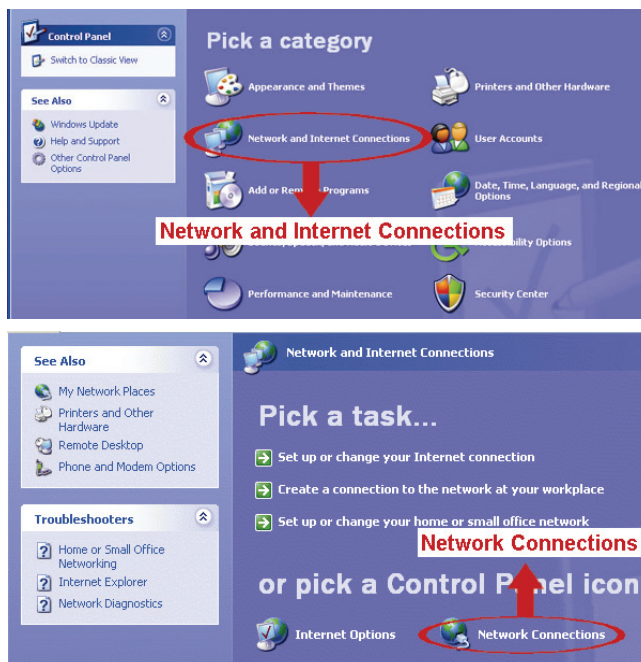
3.1 Camera Access via LAN

Step1: Connect this network camera and your PC via a RJ45 network cable, and make sure the camera is powered on.

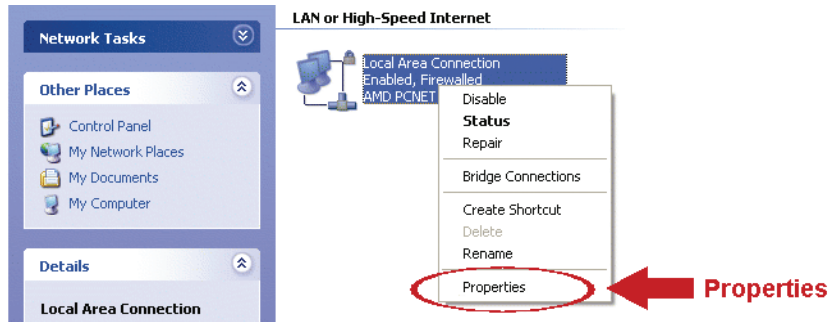
Step2: Set the PC's IP address as “192.168.1.XXX” (1~255, except 10).

For Windows XP users:

- a) Select “start” → “Control Panel” → “Network and Internet Connections” → “Network Connections” (If you're in “Category View”).



- b) In “LAN or High-Speed Internet”, right-click on “Local Area Connection”, and select “Properties”.




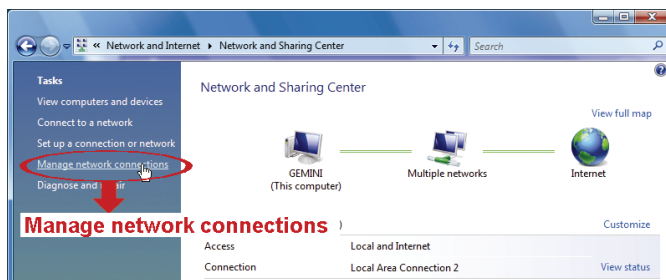
- c) In the “General” tab, select “Internet Protocol (TCP/IP)”, and select “Properties”.
d) In the “General” tab, select “Use the following IP address”, and set the IP address to “192.168.1.XXX” (XXX can be any value from 1~255 except 10).

Note: It’s recommended to note down the current settings first and then change as instructed. It’s helpful when you need to restore the PC network settings for connecting to Internet later.

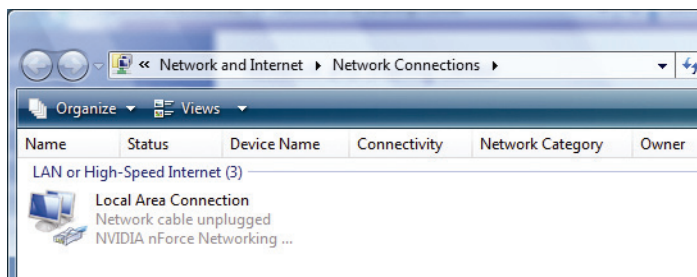
- e) Click “OK” to close the “Internet Protocol (TCP/IP) Properties” dialog box. Then, click “Close” to close the “Local Area Connection Properties” dialog box.

For Windows Vista users:

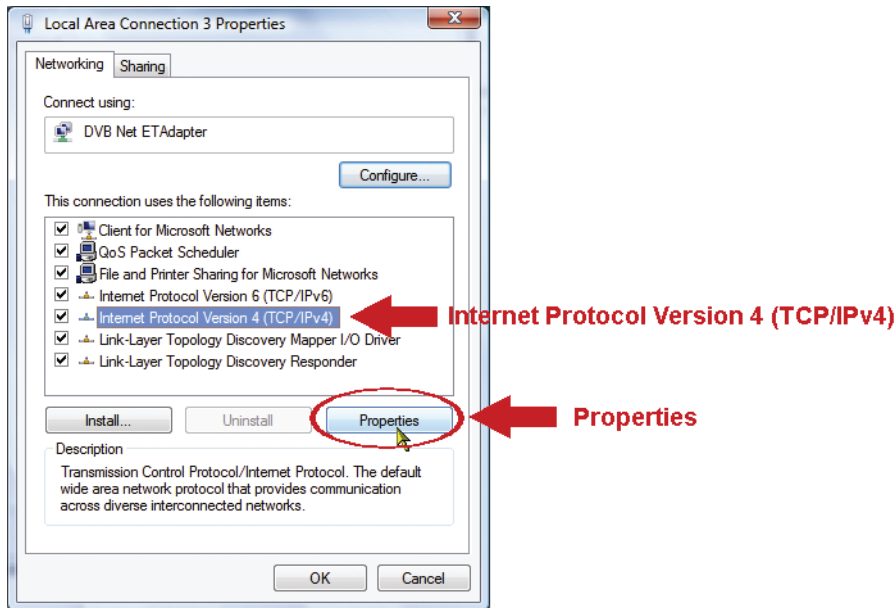
- a) Select “” (start) → “Control Panel” → “Network and Internet” to enter the “Network and Sharing Center”. Then, click “Manage network connections” (If you’re in “Category View”).



- b) Right-click on “Local Area Connection”, and select “Properties”.

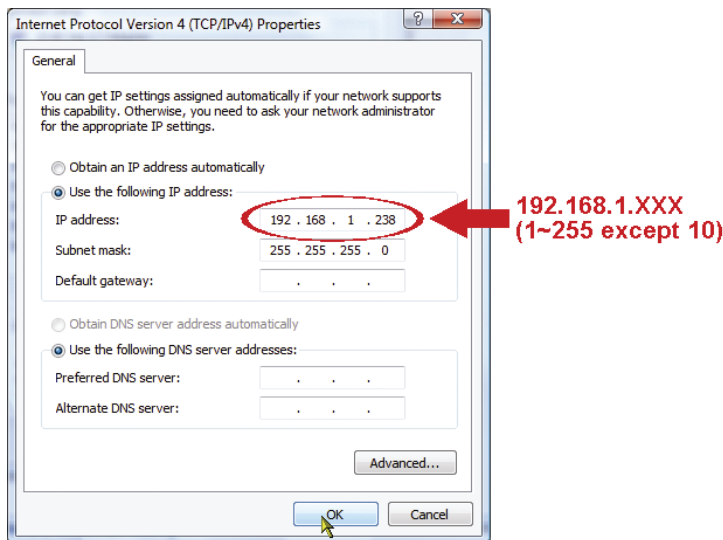


- c) In the “Networking” tab, select “Internet Protocol Version 4 (TCP/IPv4)”, and select “Properties”.



- d) In the “General” tab, select “Use the following IP address”, and set the IP address as described below.

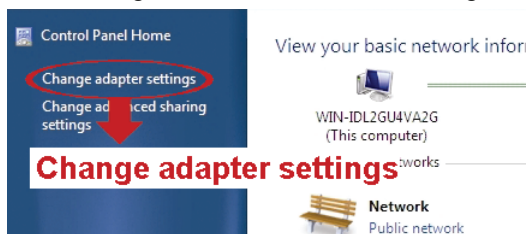
Note: It’s recommended to note down the current settings first and then change as instructed. It’s helpful when you need to restore the PC network settings for connecting to Internet later.



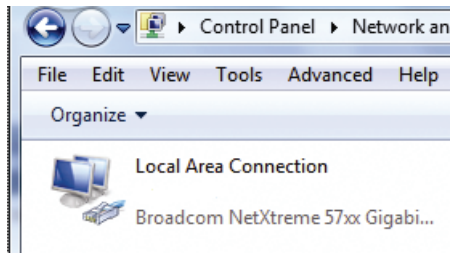
- e) Click “OK” to close the “Internet Protocol Version 4 (TCP/IPv4) Properties” dialog box. Then, click “Close” to close the “Local Area Connection Properties” dialog box.

For Windows 7 users:

- a) Select “Start” (start) → “Control Panel” → “Network and Internet” to enter the “Network and Sharing Center”. Then, click “Change adapter settings”.



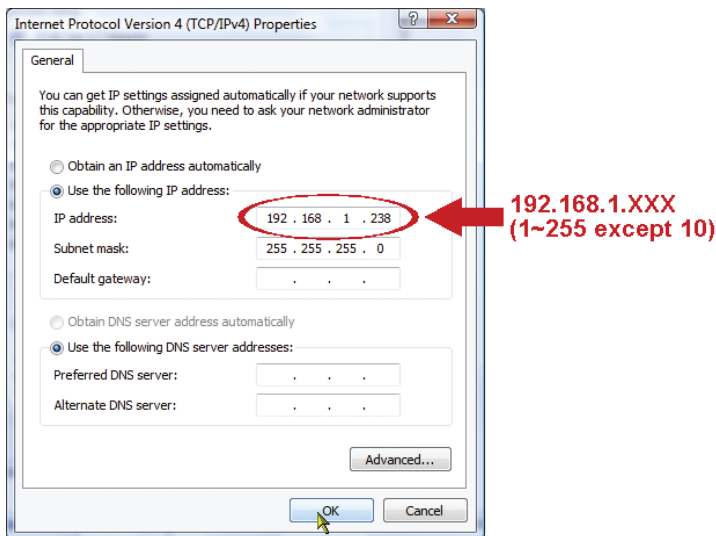
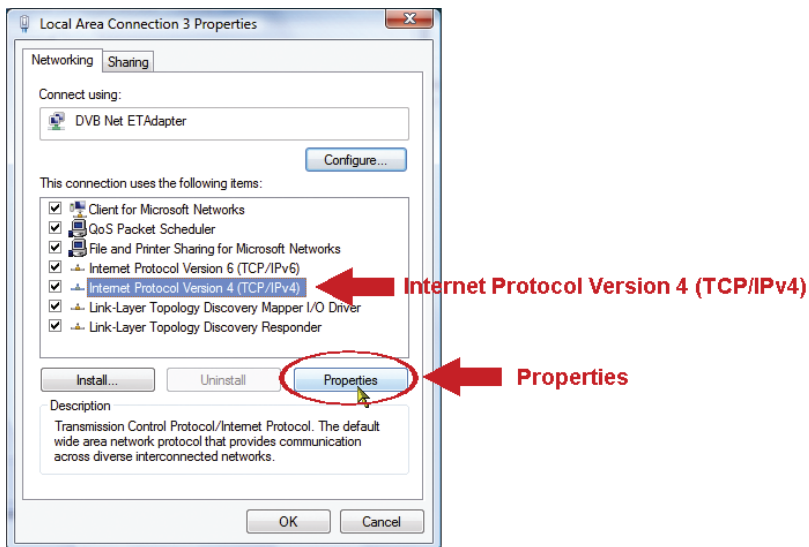
b) Right-click on “Local Area Connection”, and select “Properties”.



Note: If your local area connection is not enabled, please also enable it.

- c) In the “Networking” tab, select “Internet Protocol Version 4 (TCP/IPv4)”, and select “Properties”.
- d) In the “General” tab, select “Use the following IP address”, and set the IP address as described below.

Note: It’s recommended to note down the current settings first and then change as instructed. It’s helpful when you need to restore the computer’s network settings for connecting to Internet later.



e) Click “OK” to close the “Internet Protocol Version 4 (TCP/IPv4) Properties” dialog box. Then, click “Close” to close the “Local Area Connection Properties” dialog box.

3.2 Network Configurations via Wizard

A quick installation wizard is available via your web browser for password change, date & time settings, and network configurations.

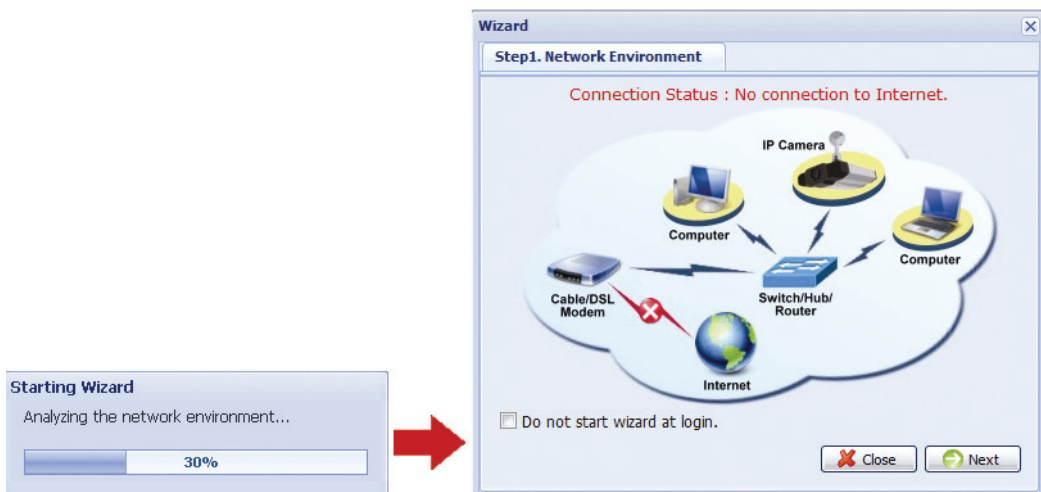
Note: You can also change the settings in the system configuration page via your web browser later. For details, please refer to “4. CAMERA CONFIGURATIONS VIA WEB BROWSER” in the user manual.

Step1: Open your web browser, for example, Microsoft Internet Explorer, and enter “<http://192.168.1.10>” in the URL address box.

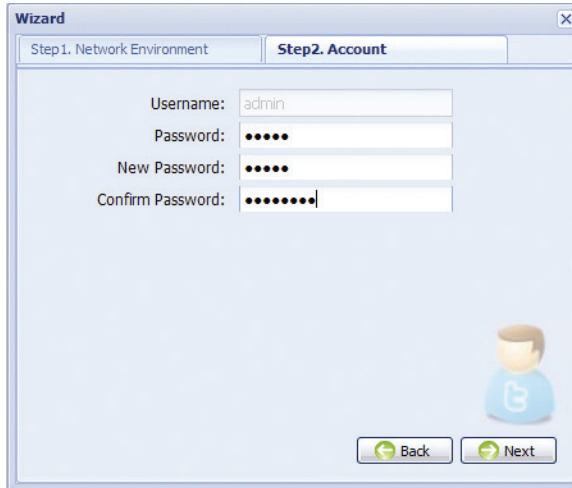
Step2: In the login page, key in the default user name (*admin*) and password (*admin*), and enter the security code from the image below. Then, click “LOGIN”.



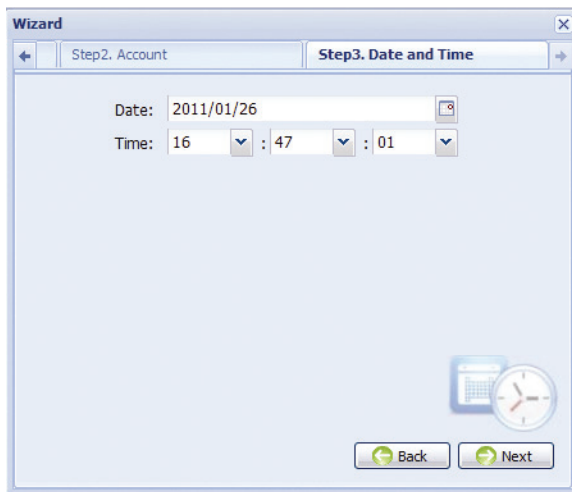
Step3: The wizard is then starting analyzing your network environment, and shows your network environment. Select “Next” to continue.



Step4: In “Account”, change the access password if needed. If not, leave all the columns blank, and select “Next”.

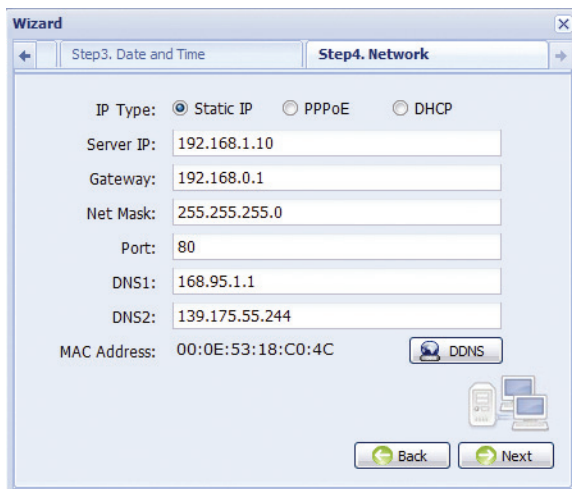


Step5: In “Date and Time”, check if the date and time setting are correct and modify if necessary.



Step6: In “Network”, select the network type based on your network environment (Static IP / PPPoE / DHCP), and key in the information needed.

Note: This camera doesn't support POE router or hub.



For Static IP:

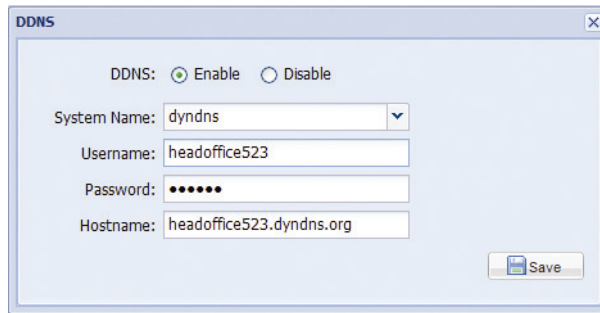
- a) Enter the information of “Server IP”, “Gateway” and “Net Mask” obtained from your ISP (Internet Service Provider).
- b) Enter the port number. The valid number ranges from 1 to 9999. The default value is 80. Typically, the TCP port used by HTTP is 80. However in some cases, it is better to change this port number for added flexibility or security.

For PPPoE:

- a) Enter the user name and password obtained from your ISP.
- b) Continue the DDNS setting by clicking the “DDNS” button, as reminded in this page.

Note: You need to create a DDNS account from a website which provides free DDNS service first. For details, please refer to “APPENDIX 1 CREATING AN ACCOUNT FOR DDNS SERVICE” at page 14.

- Select the system name you set when subscribing the DDNS service from the drop-down list, for example, dyndns.
- Enter the user name & password you used to log into the DDNS service.
- Then, enter the host name you set when subscribing the DDNS service, for example, headoffice523.dyndns.org.



- c) Select “Save” and return to the wizard.

For DHCP:

- a) Before selecting this option, you need to finish the DHCP router settings first. Get a router and connect it to the Internet via your computer (with Static IP or PPPoE setting). There are different setting methods for different routers. Please refer to their respective user manuals.
- b) Continue the DDNS setting by clicking the “DDNS” button, as reminded in this page.

Note: You need to create a DDNS account from a website which provides free DDNS service first. For details, please refer to “APPENDIX 1 CREATING AN ACCOUNT FOR DDNS SERVICE” at page 14.

- Select the system name you set when subscribing the DDNS service from the drop-down list, for example, dyndns.
- Enter the user name & password you used to log into the DDNS service.
- Then, enter the host name you set when subscribing the DDNS service, for example, headoffice523.dyndns.org.

c) Select “Save” and return to the wizard.

Step7: In “Apply”, all the changes are listed. Check if the changes are correct.

- If yes, click “Save”.
- If no, click “Back” to where the changes should be made for modification, and click “Save” to apply the settings.

Note: You can also change the settings in the system configuration page via your web browser later. For details, please refer to “4. CAMERA CONFIGURATIONS VIA WEB BROWSER” in the user manual.

Step8: Disconnect your camera and your PC, and connect them to Internet separately.

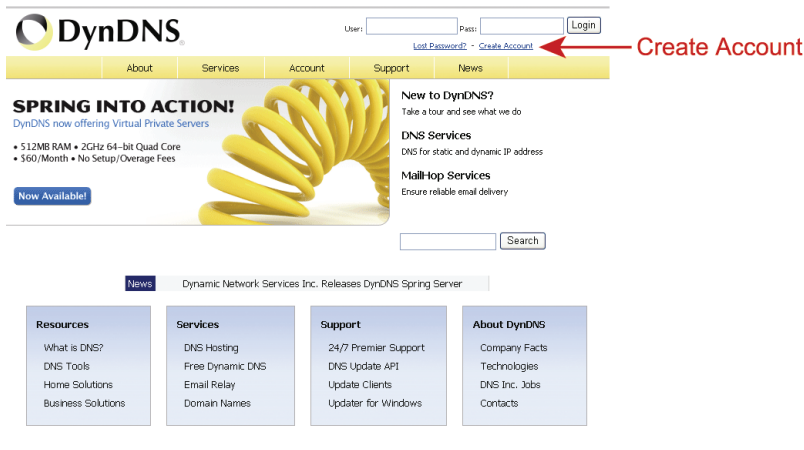
Step9: Enter the host name you just note down in the URL address box of the web browser, and see if you can access the camera successfully.

APPENDIX 1 CREATING AN ACCOUNT FOR DDNS SERVICE

For PPPOE or DHCP, you should enter the host name which points to the IP address of your network camera for login first. Besides using the default DDNS service, you can also apply for new DNS services.

There are many websites for free DDNS service application, and below shows an example of DDNS account application from the website <http://www.dyndns.com>.

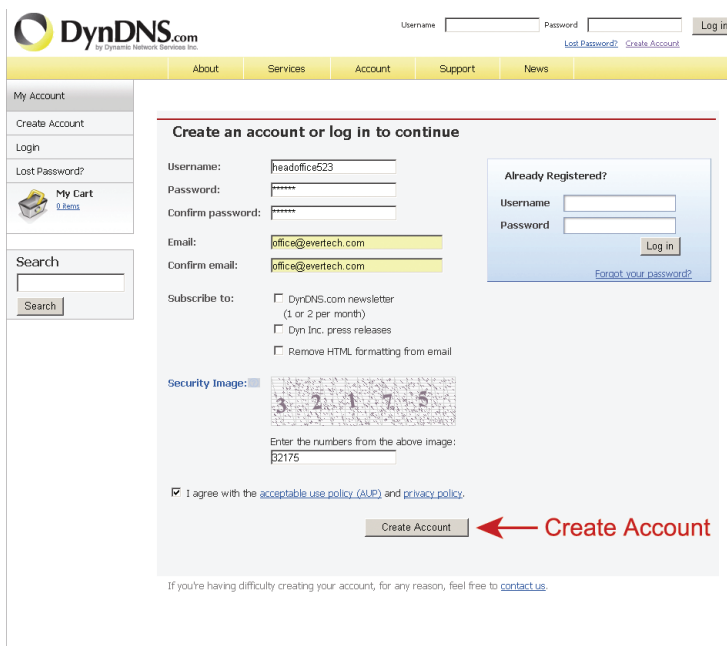
Step1: Go to <http://www.dyndns.com>, and click “Create Account” to sign up a DDNS account.



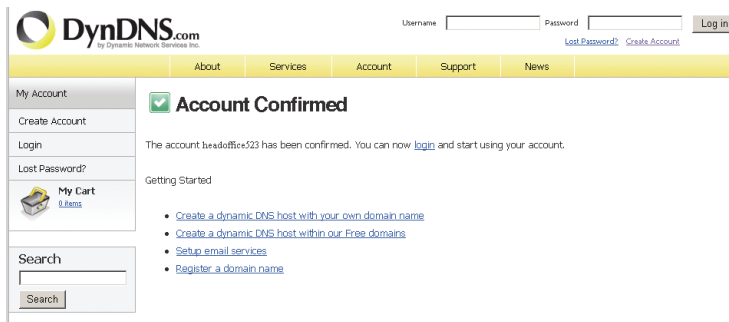
Step2: Enter all the information necessary for signing up an account according to the website instructions.

- Key in a user name for login, for example, *headoffice523*.
- Set the password and input it again to confirm.
- Key in your E-mail address and input it again to confirm.

Then, click “Create Account”.

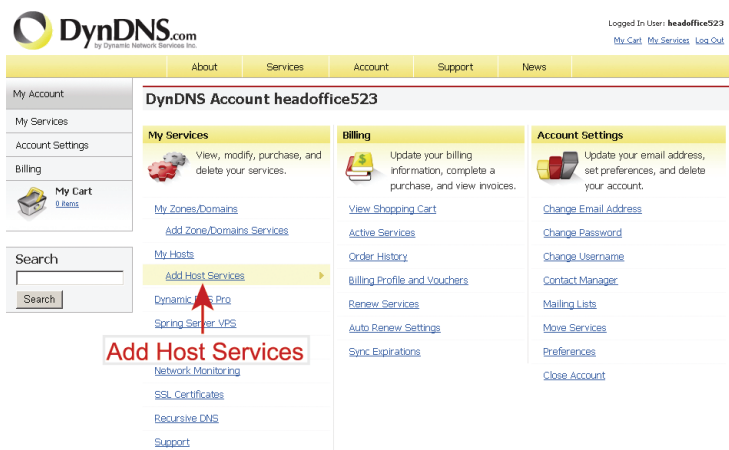


Step3: The system will automatically send a confirmation email to your email account. Please read this email within 48 hours and complete the procedure to activate your account according to the instructions in the email. When the account is confirmed, you will see “Account Confirmed”. Your account is created successfully now.



Step4: Click “login”, and enter the user name and password you preset before to log in.

Step5: Click “Add Host Services”.



- Input a meaningful host name.
- Choose a host system name.
- Enter the IP address you want to redirect.

Note down the whole host name, for example, *headoffice523.dyndns.org*. Then, click “Add To Cart” for billing.

DynDNS.com
 Logged In User: headoffice523
[My Cart](#) [My Services](#) [Log Out](#)

[About](#) [Services](#) [Account](#) [Support](#) [News](#)

Add New Hostname [↑ Host Services](#)

Note: You currently don't have any active [Dynamic DNS Pro upgrade](#)s in your account. You cannot use some of our Host Service features. Paying for an Dynamic DNS Pro upgrade will make this form fully functional and will add several other features.

Hostname: .

Wildcard Status: Disabled [[Want Wildcard support?](#)]

Service Type:

 Host with IP address

 WebHop Redirect

 Offline Hostname

IP Address:

[Use auto detected IP address 211.75.84.96.](#)

[TTL value is 60 seconds. Edit TTL.](#)

Mail Routing: Yes, let me configure Email routing.

← **Add To Cart**

Note: This service is free. Just finish the billing process, and **NO** paying information is required.

Step6: Click “Activate Services” after checkout, and you’re ready to use DDNS services now.

Free Services Checkout

Once you have confirmed the contents of your cart your services will be instantly activated.

Service	Period	Price
Dynamic DNS Hosts headoffice523.dyn dns.org	-	\$0.00
Sub-Total:		\$0.00

← **Activate Services**

Step7: Return to your web browser, and go to “Network” → “DDNS”. Follow the description in “3.2 Network Configurations via Wizard” at page 10.

APPENDIX 2 MOBILE SURVEILLANCE VIA EAGLEEYES

EagleEyes is a mobile phone program used with our surveillance system (DVRs or network cameras) for remote surveillance. It has several advantages:

- It's free (Except *EagleEyes Plus* for iPhone).
- It's compatible with several popular mobile platforms, such as iPhone, BlackBerry, Symbian, Windows Mobile and Android.

It's easy to download, install and configure. For more details about configuring and operating this program, please visit our official website www.eagleeyesctv.com.

A2.1 Prerequisites

Before installing EagleEyes to your mobile phone for remote surveillance, make sure you have checked the following:

- ✓ Your mobile platform is iPhone, BlackBerry, Symbian, Windows Mobile & Android.
- ✓ Mobile Internet services are subscribed and available to use for your mobile phone.

Note: You might be charged for Internet access via wireless or 3G networks. For the Internet access rate details, please check with your local network operator or service provider.

-
- ✓ Your DVR or network camera is powered on and connected to Internet.
 - ✓ You have noted down the IP address, port number, user name and password used to access your DVR or network camera from Internet.

A2.2 Where to download

Connect to www.eagleeyesccctv.com from your mobile phone, and sign in.

Note: Please **DO NOT** try to download EagleEyes from your computer.

Then, select “Software” and the mobile platform of your phone to download *EagleEyes* to your phone.

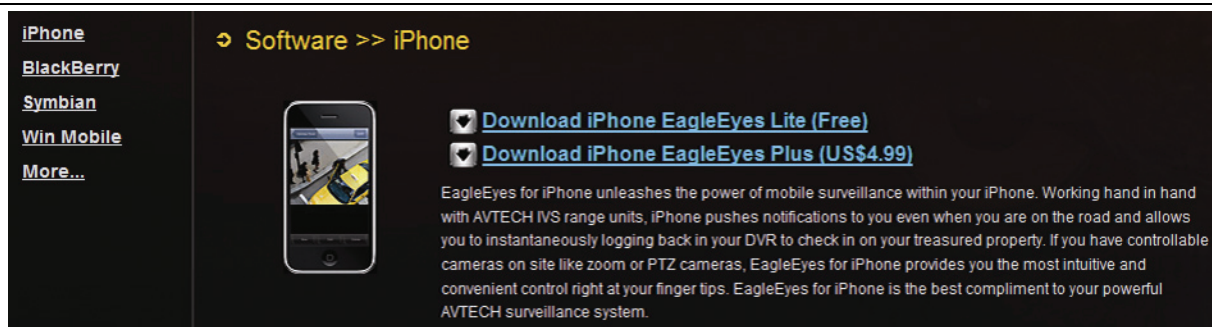
- For BlackBerry, Symbian, Windows Mobile & Android, select the download link from the website to start downloading.

Note: It's recommended to download EagleEyes for BlackBerry with the web browser of Opera.

- For iPhone, two versions of EagleEyes are available:
 - EagleEyes Plus (US\$4.99), and
 - EagleEyes Lite (Free).

Select the version you want, and you'll be directed to “App Store” to download the application.

Note: You can also find EagleEyes on “App Store” from your iPhone. Go to “App Store”, and select “Search”. Enter the keyword “eagleeyes” to find and download the version you want.



When the download is completed, *EagleEyes* will be installed automatically to the location where all applications are saved in your phone by default, or where you specify.

Note: For more details about configuring and operating this program, please visit our official website www.eagleeyesccctv.com.
